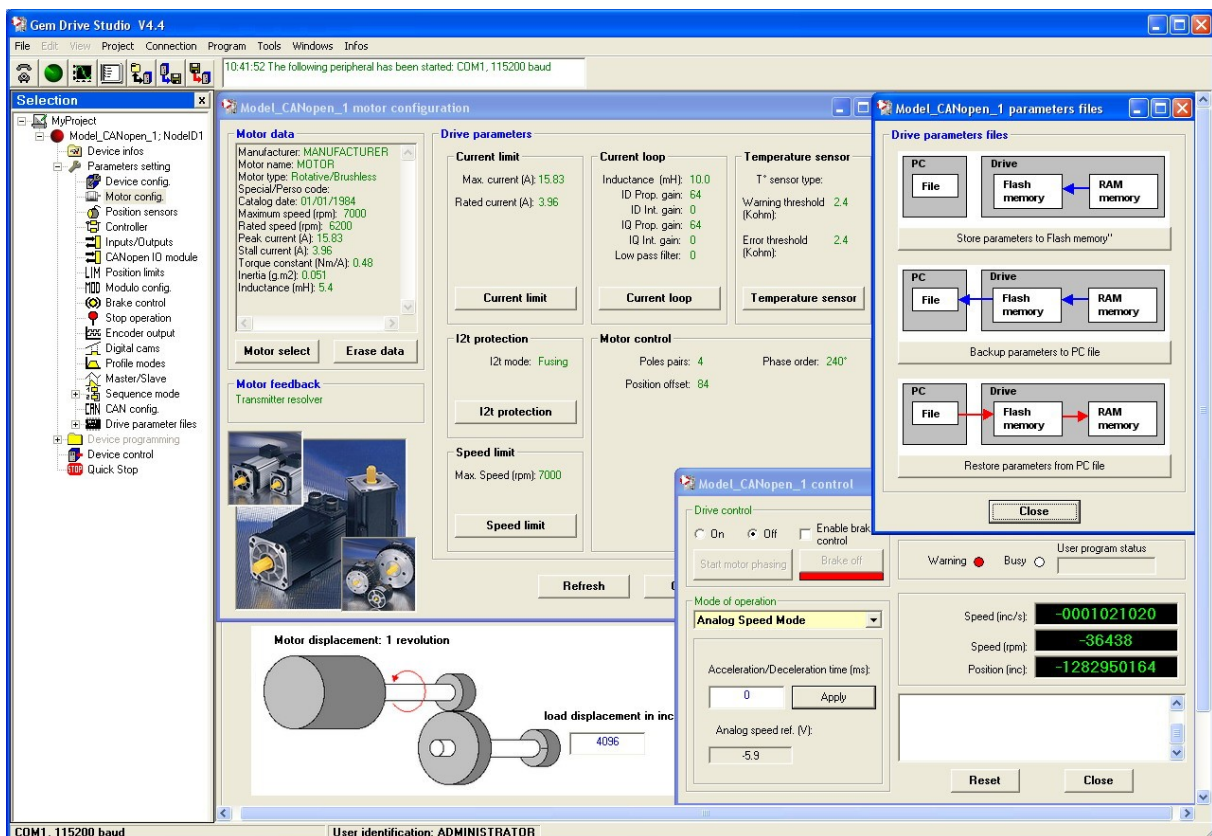


Gem Drive Studio

Parameterization software tool for drives

Quick Start manual



Content

Content	3
1. Introduction	5
2. System	5
2.1 Minimum configuration	5
2.2 Restrictions	5
3. Installation	5
3.1 Installation procedure	5
3.2 Important notes	5
3.3 CANopen drivers	6
3.4 EtherCAT® drivers	6
4. Starting the software	7
4.1 The user levels	7
4.2 Password modification	7
4.3 User interface	8
4.4 Help display	8
4.5 Interface language	8
4.6 Configuration of the software	8
5. Communication principles	9
6. Object dictionaries	10
6.1 Introduction	10
6.2 Use	10
7. The projects	11
7.1 Introduction	11
7.2 Creation of a new project	11
7.3 Adding drives to a project	11
7.4 Remove drives from a project	11
7.5 Saving a project	12
7.6 Archiving a project file	12
7.7 Unarchiving a project file	12
7.8 Automatic creation of a project	12
7.9 Context menus	12
8. Connecting the drives	13
8.1 Connection to one drive	13
8.2 Connection to all drives	13
8.3 Configuration of the communication	13
8.3.1 The hardware peripherals	13
8.3.2 The simulator	14
8.4 "Scan" function	14
8.5 Multi-axis devices without address micro-switches	14
9. The "templates"	15
9.1 Introduction	15
9.2 Selection of a "template"	15
9.3 Import of a "template"	15
10. The wizard procedures	15

11. Motor catalogue	16
11.1 Access to the catalogue	16
11.2 Management of the catalogue	16
11.2.1 Importing a new motor file in the catalogue	16
11.2.2 Removing a motor from the catalogue	16
11.2.3 Modifying a motor in the catalogue	17
11.2.4 Creation of a new motor	17
12. Application parameters	17
13. Saving/restoring files in a drive	18
13.1 Saving/restoring parameter files in a drive	18
13.2 Saving the application files	18
13.3 Restoring the application files	18
14. Programming	19
15. Sequence editor	19
16. The file system	19
- the reading/writing/removing of files in the device memory,	19
17. The dialog terminal	20
17.1 Start via the main interface	20
17.2 Start in stand-alone mode	20
17.3 Use	20
18. The oscilloscope	21
18.1 Start via the main interface	21
18.2 Start in stand-alone mode	21
18.3 Use	21
18.3.1 Menus	21
18.3.2 Display window	23
18.3.3 Control/adjustment window	24
19. Troubleshooting	25
19.1 "Unexpected error" when starting the software	25
19.2 The IXXAT peripheral is not displayed in the peripheral list	25
19.3 The communication with a new IXXAT peripheral is not possible	25
19.4 Texts and captions are empty. The word < string> is displayed on the buttons	25
19.5 The software information window displays "parameter unknown"	25

1. Introduction

The **Gem Drive Studio** software tool has been developed for the parameterization and commissioning, from a PC and via a serial link RS232, of series XtrapulsGem, XtrapulsPac and next generation drives.

Gem Drive Studio is a multi-axis software that allows the parameterization of all drives in a same application via one single connection.

2. System

2.1 Minimum configuration

- Pentium III processor,
- 512 MB RAM,
- 15" screen, 256 colour screen, 1024x768 resolution
- Keyboard + mouse
- Windows© XP Service pack2 operating system
- Microsoft .NET Framework V3.5 or V4.0 installed
- 55 MB available on hard disk
- RS232 cable or USB/RS232 adapter cable or CAN IXXAT peripheral.

2.2 Restrictions

Under Windows 7 Professional 64 bit, the Service Pac 1 must be installed.

Important note: If using a USB/RS232 adapter, it is highly recommended to choose an industrial product rather than a consumer product, because of reliability and performances. It is in particular mandatory to have shielded cables (see application note regarding the use of USB/RS232 adapters).

3. Installation

3.1 Installation procedure

- 1/ Unzip the GemDriveStudioVx.xx.zip file in a directory.
- 2/ Execute the Setup.exe file from this directory and follow the installation instructions.

3.2 Important notes

1/ Before installing the new **Gem Drive Studio** version, we strongly advise to uninstall the former versions:

- Select "Parameters", then "Control panel" in the "Start" menu of Windows,
- Click on the "Add/remove program" icon and select "Gem Drive Studio" in the list, then click on "Add/remove".

Former versions can also be uninstalled from the menu "Start/Gem Drive Studio/Uninstall Gem Drive Studio".

2/ If the installation program is detecting that files already installed on the hard disk are more recent than those of the installation, we advise to keep these hard disk files.

3/ For a correct operation of the software tool, use ONLY the dot "." as decimal separator when entering digital values. Do not use any thousands separator.

4/ The installation of **Gem Drive Studio** under Windows XP, Vista or Seven requires the opening of an Administrator session. The software can later be used by users having rights but not mandatorily administrator rights.

5/ Import module of old projects

From version 4.X of the software, important changes have been introduced into the organization of the installed files for allowing the use of the software by people without administrator rights. Consequently, some files (configuration, passwords, motors, projects) which have been created with a former software version (3.X) cannot be accessed anymore from version 4.x. But a module has been implemented into the installer which allows importing these older files.

6/ For any complementary information regarding the installation, please see the "readme.txt" file. This file also contains the historical background of the software evolutions.

3.3 CANopen drivers

- IXXAT drivers

These drivers allow managing the CAN peripherals developed by company IXXAT. The user is free to install them or not.

a/ The user installs the drivers:

If an older version of the IXXAT drivers already exists in the PC, the installer will suggest uninstalling the old drivers before installing the new ones. It is recommended to accept this procedure. At the end of the installation, the user will get suggested to reboot the PC. This step should be postponed but it is mandatory for using the new drivers.

b/ The user does not install the drivers:

If IXXAT drivers are already installed on the PC, they will not be uninstalled. But the CANopen IXXAT peripheral will not be proposed in the Gem Drive Studio software.

Any additional information regarding the installation can be found in the "readme.txt" file. This file also contains a history of the software evolutions.

If a problem occurs when installing the software and/or during the driver commissioning, please refer to Chapter "Troubleshooting".

3.4 EtherCAT® drivers

The communication via EtherCAT® requires the installation of the WinPcap software. This software is now automatically installed together with Gem Drive Studio.

4. Starting the software

After installation of the software, 3 new icons are displayed on the desktop:

- a "GemDriveStudio" icon for starting the main interface,
- an "Oscilloscope" icon for starting the digital oscilloscope,
- a "Dialog window" icon for launching a dialog terminal.

Note: When launching the software for the first time, if the message "Unexpected error" is displayed, click with the right mouse button on the launching icon and select "Execute as administrator".

4.1 The user levels

The software contains three user levels:

a/ The Administrator, who can:

- create and manage a project,
- apply a pre-defined drive configuration,
- read and modify parameter values,
- start the execution of motions,
- change the passwords.

The administrator's default password is: *admin*.

b/ The "Level 1" user can:

- read and modify parameter values,
- start the execution of motions.

The Level 1 user's default password is: *user1*.

c/ The "Level 2" user can only read parameters (monitoring).

This user level does not require any password.

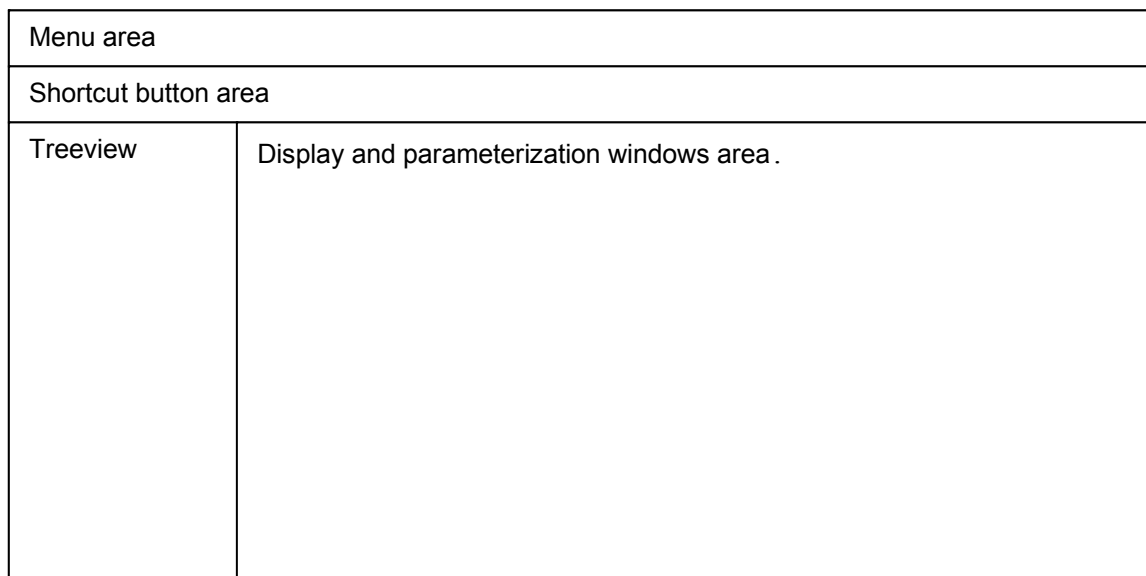
4.2 Password modification

Passwords can only be modified by an administrator by clicking on the button "Change password" in the ID window accessible from the "Tools / User identification" menu.

4.3 User interface

The user interface allows the parameter display and modification of the application drives. This interface is made of various windows accessible via menus or buttons.

All windows, except for the oscilloscope and terminal ones, are contained in the main window:



The treeview presents the items for each drive of the bus. The functions accessible via this tree are the parameterization, the sequence edition, the axis control, the programming and the information display (I/Os, status, controls, ...).

The central area contains the parameterization, control or information windows selected in the treeview.

Non-accessible items with regard to the user level correspond to non-implemented functions in the drive and are disabled or hidden.

4.4 Help display

In all parameterization windows, The F1 key displays a context help.

4.5 Interface language

In the menu "Tools/Select language", the operator can select the interface language among English, French and German. The software must be re-started to make this change effective.

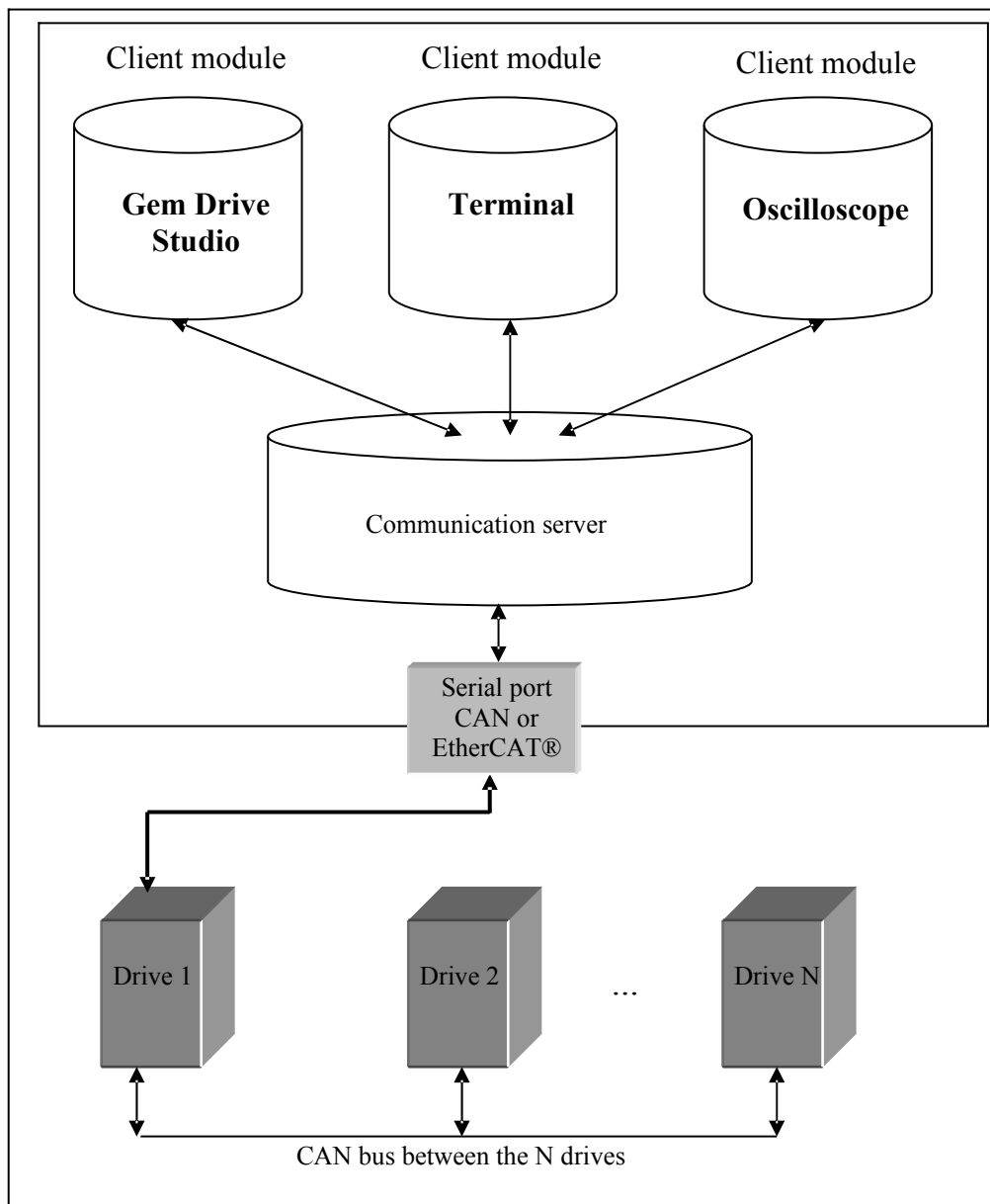
4.6 Configuration of the software

In the menu "Tools/Software configuration", the operator can define various displays for the navigation tree and for the control window.

5. Communication principles

The software is made of several independent modules. Each module can communicate with one of the application drives via a communication server.

The communication with any of the application drives is established by connecting with one of them via a serial link or a CANopen link (requires the installation of a CAN IXXAT card in the PC). The communication between the connected drive and all others is ensured by a CAN link only.



The various software modules consist of autonomous and independent executable programs. These programs can be independently launched or from the main module.

- The server is automatically started when a client module tries to establish a communication with a drive.
- The server commissions the drivers of the peripherals.

- The peripheral used is released when the last client is disconnected, but the server remains active.
- The format of the exchanged data is always the same, whichever the selected communication type (RS232 or CANopen).

6. Object dictionaries

6.1 Introduction

A drive parameter corresponds to an object accessed via an Index and a Sub-index. Each drive contains a dictionary grouping all objects used by the drive. In the dictionary, each object (parameter) is identified and described. So, for each object, the description contains:

- the index,
- the sub-index,
- the name,
- the type,
- the access type (reading, writing, reading only or writing only),
- the possibility or not to map the object in a PDO message,
- the variation range,
- the behaviour (modification when enabled or disabled, saving into the EEPROM, ...),
- the category (motor parameter, regulator, communication, application, ...).

In fact, this dictionary contains the information which are generally contained in the EDS (Electronic Data Sheet) file available with any product complying with the CANopen protocol standard. But the information contained in the drive dictionary are more complete than those of the EDS file.

Concretely, an object dictionary is an XML file containing the object list for a given drive version. The file name corresponds to the object dictionary version (example: 0x02000103.xml).

6.2 Use

The object dictionary is used by the software for communicating with a drive. The dictionary files corresponding to the various drive versions are included in the software package.

If the required dictionary is missing in the dictionary library of the installation directory (for a new drive version for example), the software makes it possible to add a new dictionary in the library by importing it.

The object library files can be downloaded from our website www.stegmaier-haupt.de. Further, for importing one or several object dictionary(ies) into the software, select the menu "Tools/Embedded EEDS catalogue"/"Import new embedded EEDS file".

Select, on the disk, a dictionary file (.xml format) or a compressed file (.Zip format) containing several dictionary files.

After validating, the new file(s) will be added to the dictionary library.

7. The projects

7.1 Introduction

A project consists of a representation of the application with all the drives connected to the fieldbus. Thus, the project structure makes it possible to directly start the communication with one or several drives of the application. It also allows the backup of the parameter, sequence, configuration and programming files of each drive.

The authorized user (administrator) only can define a project.

The project organization on the hard disk is the following:

- a < project _ name >.prj file containing the project composition,
- possibly a < project _ name >.back file allowing the management of the project modifications,
- sub-directories which name is the one of the project drives and which contain the parameter, sequence, programming, ... files for each drive.

The software can be started by a double click on an existing project file.

7.2 Creation of a new project

The creation of a new project only requires the selection of "New project" in the menu, then the selection of a name and an output directory on the disk.

A description text of the project can also be entered when the project is created.

Further, for the display/modification of the name, the output directory or the project description, select "Project" then "Properties" in the menu bar.

Note: For opening the project directory, select "Project" then "Open the directory".

7.3 Adding drives to a project

A drive is added to the project by a right mouse click on the project in the tree and by selecting "Add a device", or from the menu bar by selecting "Project" and then "Add a device".

A drive list with several possible ratings is then proposed. After selection of the drive type, enter its name and node number (address on the fieldbus).

After validation, a new item is created in the treeview and a default parameter file corresponding to the selected drive is automatically saved in its directory.

7.4 Remove drives from a project

A drive is removed by selecting "Remove a device" after a right mouse click on the project name in the treeview, or by a direct right mouse click on the drive, in the tree, and by selecting "Remove" <drive_name> from the project, or also from the menu bar, by selecting "Project" then "Remove a device".

7.5 Saving a project

For saving a project, select the "File" menu, then "Save project".

For saving a project with another name, select "Save project as ..." in the "File" menu.

Note: When starting the software, the last project used is loaded in by default, but the software can also be launched by double-click on a project file (.prj).

7.6 Archiving a project file

Archiving a project groups all files of a project as well as its tree in a ZIP file. It offers the advantage of transferring a project to another PC.

For archiving a project, select "Archive the project" in the "File" menu, then select a name for the ZIP file.

7.7 Unarchiving a project file

For unarchiving a project, select "Unarchive the project" in the "File" menu, then select the archive ZIP file and an output directory.

The project is then unarchived and the user gets proposed to open it.

7.8 Automatic creation of a project

If the project structure for starting communicating with an application is not available, the user can then use the "Scan" function. This function searches all drives connected to the bus and starts the communication. A temporary project is then automatically created with the list of detected drives.

Click at first on the "Scan" button in the shortcut bar. Select the communication type (RS232 or CANopen), the COM port number or the peripheral, the communication speed and the address field of the application drives.

After validation, a window is displayed that allows the control of the procedure progressing.

New items corresponding to the detected drives are displayed in the treeview and a temporary project is created in the directory "My documents / GemDriveStudio / MyProject".

This temporary project can be definitely saved by selecting "Save project" in the "File" menu.

7.9 Context menus

In the navigation treeview, a right mouse click allows the access to a context menu:

a/ By clicking on the project name, the user can:

- add a drive,
- delete a drive,
- display the properties of the project,
- open the Windows explorer in the project directory.

b/ By clicking on a drive, the user can:

- remove this drive from the project,
- connect or disconnect the drive,
- change the Node ID of the drive,
- change the drive name,
- add/delete a source file (only for programmable drives).

8. Connecting the drives

8.1 Connection to one drive

The communication with one drive, in the project, is established by a right mouse click on the node, in the project tree, and by selecting "Connect".

If no peripheral has been started, a configuration window of the communication is displayed. It allows selecting the peripheral type as well as the communication speed.

8.2 Connection to all drives

The "Connect/Disconnect" button in the shortcut bar starts the communication with all drives of the project tree in the increasing address order.

8.3 Configuration of the communication

The configuration window of the communication allows the type selection of the peripheral used for communicating with the devices. According to the selected peripheral, the user must select the card type, the communication speed, etc.

8.3.1 The hardware peripherals

The peripherals presently implemented in the communication server are:

A/ The serial link

When selecting this peripheral, the user must select the COM port ID as well as the communication speed. The available COM ports can be native ports of the PC or the software ports used for a USB => RS232 adapter.

B/ The CAN bus

Only the peripherals developed by IXXAT are supported.

The user must select the CAN card type to be used, the communication speed and the SDO channel.

One of both SDO1 and SDO2 channels can be selected.

In standard, the channel SDO1 is used for the connection between a device and the PC, and the channel SDO2 for the communication between the devices themselves.

If a numerical controller is connected to the application, it will use the SDO1 channel. In this case, if the user wants to connect a PC and use the Gem Drive Studio software, he will have to select the SDO2 channel for configuring the communication.

C/ The EtherCAT® bus

This bus only concerns devices able to manage the EtherCAT® protocol.

When selecting this peripheral, the user can choose a network card or launch a procedure allowing the automatic detection of the network card to which a slave device is connected.

8.3.2 The simulator

The simulator prepares the parameterization of one or several device(s) without having these devices physically connected.

The simulator is a virtual peripheral which can be selected in the communication configuration window. When this peripheral is selected, all devices defined in the project are simulated.

In order to get a device simulated, the device directory of the project must contain a file with name DRIVEPAR.TXT.

The simulated devices are marked with a blue bullet in the navigation tree.

All parameterization windows can be used with the simulator except for the firmware update in the file management window.

Use of the simulator for analysing an existing project:

The content of the parameterization windows is initialized with the values contained in the device parameter files.

Use of the simulator for preparing an off-line parameterization:

Off-line:

- Define a new project and add the application devices.
- For each device, adjust the parameters in the various parameterization windows.
- Use the "Backup" function for generating and saving the parameter files.
- If required, use the archiving function allowing the transfer of the project to another PC.

On the PC connected to the application:

- Open the project previously created off-line after having unarchiving it, if it has been created on another PC.
- In the communication configuration window, select a hardware peripheral.
- Use the "Restore" function for transferring the parameter files to the connected devices.

8.4 "Scan" function

The "Scan" button in the shortcut bar allows the searching of all drives connected to the bus and the communication start. The user can select the communication type (RS232, EtherCAT® or CANopen), the COM port number or the peripheral, the communication speed and the address field of the application drives.

Note: If a drive available on the bus is not detected, check that its address actually belongs to the addresses to be scanned, and check the connections.

The "Scan" function is not available if the selected peripheral is the simulator.

8.5 Multi-axis devices without address micro-switches

The standard addresses, for this device type, are 1, 2 and 3. These addresses can be changed in the menu "Tools/ Node ID setting". After the saving of these parameters, the new addresses are taken into account at the re-start of the device.

9. The "templates"

9.1 Introduction

The "Device Config" window accessible in the parameterization tree "Parameter setting" of a drive allows selecting, in a list (filed by family), a pre-defined drive configuration according to the required application type (analog speed drive, stand-alone positioner, ...). This configuration concerns the inputs and outputs allocation as well as the operation mode. When a pre-defined configuration (Template) is selected, the drive parameterization tree "Parameter setting" only displays the parameters pertaining to this application. This function allows a quick configuration of the drive for standard applications. The user can return at any time to the complete configuration mode by selecting "Expert" in the list of the "Device Config" window.

Only the authorized user (administrator) can apply a pre-defined configuration to the drive.

9.2 Selection of a "template"

- Open the "Device Config" window accessible in the parameterization tree "Parameter setting" of a drive;
- Choose, in the lists ("Family" and then "Template"), a pre-defined drive configuration according to the required application;
- Select the "Apply selected configuration" command in order to simultaneously configure the drive and the software parameterization tree.

9.3 Import of a "template"

The menu "Tools/Template files"/"Import new template archive" allows the selection of an archive file (.Zip format) containing the files required for importing a new template.

10. The wizard procedures

Wizard procedures are guiding the operator by automatically opening and closing the parameterization windows while displaying instructions regarding the currently displayed window. The commissioning of a new motor is an example of wizard procedure.

The wizard procedures are accessed by the menu "Tools/Wizard procedures" or by clicking on the magic wand symbol.

Select the appropriate drive and the procedure, then click on the start button and follow the instructions.

During the progress of a wizard procedure, the drive control window is continuously displayed. This allows the re-initialization of possible errors in the drive during the procedure.

11. Motor catalogue

11.1 Access to the catalogue

The management window of the motor catalogue is accessed via the "Tools/Motor catalogue" menu.

When the user selects this catalogue window, the software analyses all files of the "Motors" directory and creates a treeview corresponding to the motors found.

- The motor classification criteria are the following:
 - the manufacturer,
 - the supply voltage,
 - the sensor type.

- A motor is identified by:
 - the manufacturer
 - + the model
 - + the special code/customization.

- There is one XML file per manufacturer.

11.2 Management of the catalogue

a/ Modify the parameters of the selected motor ("Edit" button).

b/ If a motor is selected, remove it, or remove a complete file if no motor is selected ("Remove" button).

c/ Define and add a new motor (button "Add new motor") in the UserMotor.xml file (by default) or in another file.

d/ Search and add a new motor file in the catalogue ("Import" button). The import of a new motor list is similar to adding a compatible XML file in the application "Motors" directory. If a file with same name is already existing in the catalogue directory, a message will inform the user and ask for confirming the replacement of the existing file.

There is a difference between the "Manufacturer" motor files and the "User" motor files:

- A "Manufacturer" motor file contains the motors of a same manufacturer. Modifying parameters or adding/removing a motor in these files is not possible.
- The "User" motor files contain the motors defined by the user.

11.2.1 Importing a new motor file in the catalogue

For importing a new file in the motor catalogue, click on the "Import" button. A dialog box then allows to search and add a new motor file.

Importing a new motor list is similar to adding a compatible XML file in the application "Motors" directory. If a file with same name is already existing in the catalogue directory, a message will inform the user and ask for confirming the replacement of the existing file.

Files which are already in XML format as well as files issued from the VDSetup software tool (.dat format) can be imported. Those will be automatically converted into XML format.

11.2.2 Removing a motor from the catalogue

For removing a motor from the catalogue, select the file, then the motor, and click on the "Remove" button.

Only "User" files can be removed.

11.2.3 Modifying a motor in the catalogue

For modifying a motor in the catalogue, select the file, then the motor, and click on the "Edit" button. Only "User" files can be modified.

Scroll down the various parameter tabs by clicking on the "Next" button until the backup of the motor selected in the file.

11.2.4 Creation of a new motor

For creating a new motor, click on "Add new motor" and fill-in the various fields of the following tabs by validating each step with the "Next" button.

Step 1: Feedback sensor

Step 2: Position sensor

Step 3: Motor T° sensor

Step 4: Motor control

Step 5: Identification and parameters.

The new motor can be saved into the UserMotor.xml file by default or into a new file.

12. Application parameters

The parameterization tree "Parameter setting" of a drive allows configuration and parameter adjustment according to the application type.

The window "Device infos" contains all identification data of the device, i.e. type, rating, versions, etc.

The window "Power supply config" allows the definition of the operating voltage and indication of the braking resistor type.

The user can choose, in a list of the "Device Config" window, a pre-defined configuration of the drive (templates) for standard applications (analog speed drive, stand-alone positioner, stepper motor emulation, ...).

In the "Motor Config" window, the user can select the motor used in the motor catalogue or directly enter the parameter values of a motor that is not mentioned in the catalogue.

The "Position Sensor" window concerns the parameters of the position sensors used in the application. The sensor used for the motor control (resolver or encoder) as well as the position scaling in the user units are selected in this window.

The "Controller" window concerns the speed and position regulator parameters. The "Auto-tuning" functions as well as the following error detection threshold adjustment are selected in this window.

The other windows of the tree are depending from the selection of a pre-defined drive configuration or from the "Expert mode" selection. With the "Expert mode" selection, all parameters are accessible in the various menus. When selecting a pre-defined configuration, only the parameters required for the application are displayed.

13. Saving/restoring files in a drive

According to its type, each drive may contain some files that are necessary to its parameterization but also to its operation in the application.

There are several file types: standard parameters, user parameters, sequences, templates, etc.

The saving/restoring allow the reading of these files in the drive for saving them on the hard disk (project directory) or, on the contrary, to parameterize and configure a drive from the files previously saved in the project.

13.1 Saving/restoring parameter files in a drive

Saving/restoring parameter files only can be made by selecting the item "Parameter files" in the navigation tree of a drive.

The displayed window allows:

- launching the creation procedure of the standard parameter file (DRIVEPAR.TXT) in the drive,
- the backup of this file on the hard disk (project directory),
- restoring this file in the drive, from a previous backup.

It is also possible, in the same window, to save/edit/restore the file containing the user parameters (USER_PAR.TXT).

13.2 Saving the application files

Saving the application files consists in reading, in the application drives, all files required for this application, i.e. the parameter files, sequences, templates, etc., and to copy them on the hard disk, in a backup directory of the project.

The "Tools"/"Drive files backup" menu or its pertaining shortcut button allow the display of the backup window.

The various possible options are:

a/ "Backup from the project directory"

This function can be selected offline and allows the copy of all files from the drive directories to the backup directory.

b/ "Backup from the drive"

This function launches the reading of all files from the application drives to the directory of each drive in the project, and to copy these files from these directories to the backup directory.

c/ "Copy backup files to removable media"

This function allows the copy of the content of the backup directory to a removable media such as a USB key or a memory card.

13.3 Restoring the application files

Restoring the application files consists, for one or several drives, in updating its/their files from a backup directory located on a hard disk or on a removable media.

The "Tools"/"Drive files restore" menu or its pertaining shortcut button allow the display of the restoration window.

The various possible options are:

a/ "Restore all the application"

The user can select a directory containing saved files. These files are then restored in the various application drives.

b/ "Restore only 1 device"

The user can select one of the connected drives and then select a directory containing saved files. Only the files pertaining to a selected drive will be restored.

14. Programming

On programmable drives, the "Device Programming" menu, in the drive parameterization tree, allows the edition of source files saved in the project drive directory. The "Program" menu of the menu bar provides access to the programming tools. The use of the programming tools is described in the drive Programming Guide.

15. Sequence editor

The sequence editor is launched in the "Sequence mode" menu of the drive parameterization tree. The motion sequence parameterization is described in the drive User Guide.

The files containing sequence records are named as SEQUENCE.TXT and are saved in the drive directory.

- The "File" menu allows the creation, opening and saving of a sequence file. It also allows the printing of the sequence list and its parameters.
- With the "Edit" menu, the user can copy, paste and delete sequences.
- The "Transfer" allows the reading/writing of a sequence file in the drive.

16. The file system

The functions of the file system are accessible in the menu "Tools/File service".

The window "File service" allows:

- the display of the file system content of a device,
- the reading/writing/removing of files in the device memory,
- the selection of a file containing parameters and writing these parameters one after the other in the device,
- the update of the internal software of a device, for devices supporting this function and under the condition of using a communication interface other than EtherCAT®.

17. The dialog terminal

In the dialog window, the user can read or modify a parameter value by selecting it with its name or via its indexes and sub-indexes.

17.1 Start via the main interface

The terminal can be started via the main **Gem Drive Studio** interface by clicking on the appropriate short-cut or by selecting the "Tools/Dialog window" menu.

In this case, the communication parameters are those of the project, and the list of the drives accessible via the terminal corresponds to the list of drives connected in the project.

17.2 Start in stand-alone mode

The dialog terminal can also be launched in stand-alone mode by clicking on the "Gem Drive Terminal" icon of the desktop, or via the "start" menu of Windows.

In this case, the communication parameters must be defined by selecting "Configuration" and then "Communication configuration".

Select "File" and then "Connect to the fieldbus" for establishing the communication with the selected node numbers.

17.3 Use

Four identical frames allow the reading/writing of the parameters.

The data display type (decimal or hexadecimal) is selected via the menu "Configuration/View" or by means of the hot keys CTRL+D and CTRL+H.

The terminal display can always be kept in the foreground with regard to the other applications by selecting the "Configuration/Window always on top" menu.

A/ Reading a parameter on a drive:

- Select the drive (Node),
- Select a parameter by its name or by entering its index and sub-index,
- Click on button "Read".

Note: when ticking off the box of the "Read" button, the reading is continuously refreshed.

B/ Writing a parameter on a drive:

- Select the drive (Node),
- Select a parameter by its name or by entering its index and sub-index,
- Enter the parameter value in the data area,
- Click on button "Write".

Note: In hexadecimal mode, there is no need for entering neither spacings between the digits nor the non-significant 0.

18. The oscilloscope

The oscilloscope function allows the signal display and analysis in the drive.

18.1 Start via the main interface

The oscilloscope can be started via the main interface of the **Gem Drive Studio** software by clicking on the appropriate short-cut or by selecting the "Tools/Oscilloscope" menu.

In this case, the communication parameters are those of the project and the list of drives accessible via the oscilloscope corresponds to the list of the drives connected in the project.

18.2 Start in stand-alone mode

The can also be launched in stand-alone mode by clicking on the "GemDrive Oscillo" icon of the desktop or via the Windows "start" menu.

In this case, the communication parameters must be defined by selecting "Configuration" and then "Communication configuration".

Then, select "File/Connect to the fieldbus" for establishing the communication with the selected node numbers.

18.3 Use

18.3.1 Menus

The oscilloscope is made of a resizable screen allowing the curve display and of a control/parameterization panel.

The signal selection is made from the CANopen objects (index and sub-index).

The signal size can be 16 bits or 32 bits.

The signal types are the following:

- analog ("continuously" varying signal between minimum value and maximum value),
- or logic (each bit is a logic signal). The logic signals are contained in one 16 or 32 bit word.

The menu bar provides access to the following adjustment panels:

"File/Connect" menu:

Establishes the communication with the drives selected in the communication configuration window.

"File/Load from .osc file" menu:

Uploads and displays the curves saved in an .osc file.

"File/Save to .osc file" menu:

Saves the displayed curves in an .osc file.

"File/Load from an Excel file" menu:

Uploads and displays curves saved in an .xls file.

"File/Export to an excel file" menu:

Saves the displayed curves in an .xls file.

"File/Exit" menu:

Closes the application.

"Edit/Copy screen to the clipboard" menu:

Copies the displayed curves and their features to the clipboard for inserting them into a document.

"Configuration/Communication configuration" menu:

This menu is to be used for selecting the communication type and list of drives (addresses) the user wants to connect.

"Configuration/Channel configuration" menu:

In this menu, the user selects the signals to be displayed for each of the 4 oscilloscope channels.

The signal selection is made by choosing the appropriate drive, in the list, and from the CANopen objects (index and sub-index).

The signal size can be 16 bits or 32 bits.

The signal types are the following:

- analog ("continuously" varying signal between minimum value and maximum value),
- or logic (each bit is a logic signal). The logic signals are contained in one 16 or 32 bit word.

The signal acquisition in multi-axis mode requires a special configuration of the drives (the triggering is managed by PDO messages) except for natively multiaxis devices.

If the "multiaxis configuration" box is not ticked off, the selection of a drive on channel 1 automatically involves the selection of this same drive on the other channels. The selection of the drives on the other channels is inhibited.

If the "multiaxis configuration" box is ticked off, the drive list is re-initialized and contains only the drives supporting the multi-axis mode. In this mode, the user can select a different drive for each of the oscilloscope channels.

Important notes:

a/ The PDO4 is used for the triggering synchronization in multi-axis mode. Check, in that case, that the PDO is not used by the application. This restriction does not concern natively multiaxis devices.

b/ The multiaxis mode does not work if a communication via EtherCAT® has been selected.

"Configuration/Trigger configuration" menu:

This menu allows the selection of the triggering mode and channel.

Three triggering types can be selected:

A/ Analog triggering:

- high-level triggering,
- low-level triggering,
- on rising edge,
- on falling edge.

B/ Triggering on Error.

C/ Digital triggering (16 bit word):

- on value of one or several bits,
- on status change of one or several bits.

"Configuration/Screen configuration" menu:

In this menu, the user can select, for each channel, the curve colour and shape:

- dots,
- connected dots,
- discret,
- only one bit.

The user can also choose the grid type and colour, the display screen colour and the curve thickness.

"Configuration/Window always on top" menu:

This option keeps the oscilloscope in the foreground with regard to the other applications.

"Tools/Measurements" menu:

Level (cursors V1 and V2) and time (cursors T1 and T2) measurements can be made on the displayed curves.

This menu allows the display/hiding of the cursors, and associating the level measurement cursors to the oscilloscope channels.

"Tools/Auto-offset" menu:

This function recenters the selected curve on the Y axis with regard to the intersection value of this curve with the T1 cursor.

18.3.2 Display window

The display window consists of two parts:

- the curve display,
- the measuring data display.

Using the left mouse button:

- For moving the measurement cursor and the triggering line (trig),
- For moving the "T" mark indicating the triggering moment on the X axis (time).

Using the right mouse button:

- on the screen, for selecting the automatic curve scaling or for displaying/hiding the measurement cursors,
- on the triggering line (trig), for selecting the triggering type,
- on cursor T1 for refocusing a curve on the Y axis (offset),
- on cursors V1 or V2 for displaying the corresponding level values in the measurement display frame,
- on a value, in the measurement display frame, for copying this value to the clipboard and insert it into a document.

18.3.3 Control/adjustment window

In the "Channels" frames 1 to 4 the user can:

- display/hide a curve,
- reverse a curve,
- adjust offset and amplitude of a signal.

The "Display" frame allows:

- selecting the time base value,
- modifying the triggering value (modifies the "T" mark position on the display screen),
- selecting a display of Channel 2 = fct (Channel 1),
- zooming/scrolling the displayed curves.

The "Trigger" frame allows:

- displaying/hiding the triggering line,
- entering the triggering level,
- starting/stopping the acquisition,
- transferring the curves,
- changing the display resolution (for accelerating the transfer times by reducing the data volumes),
- displaying, for each channel, the transfer status (green LED: acquisition stopped, yellow LED: data currently saved, red LED: waiting for the triggering, purple LED: waiting for the delay time).

Note: After the start of an acquisition, the level and the value of the signal selected for the triggering channel are displayed on the left side of the curves display screen. These continuously refreshed information allow an easier adjustment of the triggering level.

19. Troubleshooting

19.1 "Unexpected error" when starting the software

Right click the software icon and select "Start as an administrator".

19.2 The IXXAT peripheral is not displayed in the peripheral list

After rebooting the PC, the new peripheral is generally detected. Otherwise, disconnect and reconnect the peripheral. Windows then proposes to install the driver. The automatic installation is recommended.

19.3 The communication with a new IXXAT peripheral is not possible

If an older IXXAT driver is already existing in the PC, the peripheral may use the older driver instead of the new one which has just been installed. In this case, the software will not work properly. In order to force the peripheral to use the new driver, the peripheral must be searched via the "Configuration panel/System" menu, then "Material and Peripheral Manager". Search the IXXAT peripheral in the list and select "Update the driver" by a right mouse click. Select the automatic installation. Windows shall then select the more recent driver version.

19.4 Texts and captions are empty. The word < string> is displayed on the buttons

The software questions the Windows registry for getting the location of the "Application data" and "Shared documents" directories. These directories contain the files required for running the software, such as translation, motor lists, object dictionaries, etc. In some rare cases, the registry keys may have been modified by the installation of some softwares which force the value of these keys instead of reading them for knowing their value.

The correct keys for Windows XP are the following:

```
HKLM\SOFTWARE\Microsoft\Windows\CurrentVersion\Explorer\Shell Folder\Common AppData =
C:\Documents and settings\All Users\Application Data
and
HKLM\SOFTWARE\Microsoft\Windows\CurrentVersion\Explorer\Shell Folder\Common Documents =
C:\Documents and settings\All Users\Documents
```

The correct keys for Windows Seven are the following:

```
HKLM\SOFTWARE\Microsoft\Windows\CurrentVersion\Explorer\Shell Folder\Common AppData =
C:\ProgramData
and
HKLM\SOFTWARE\Microsoft\Windows\CurrentVersion\Explorer\Shell Folder\Common Documents =
C:\Users\Public\Documents
```

19.5 The software information window displays "parameter unknown"

The object dictionary used for the connection with the drive is incomplete or corrupted. Re-install the software for updating the dictionary library.

Stegmaier-Haupt GmbH
Industrieelektronik-Servoantriebstechnik
 Untere Röte 5
 D-69231 Rauenberg
 Tel.: 06222-61021
 Fax: 06222-64988
 Email: info@stegmaier-haupt.de
 Http: // www.stegmaier-haupt.de